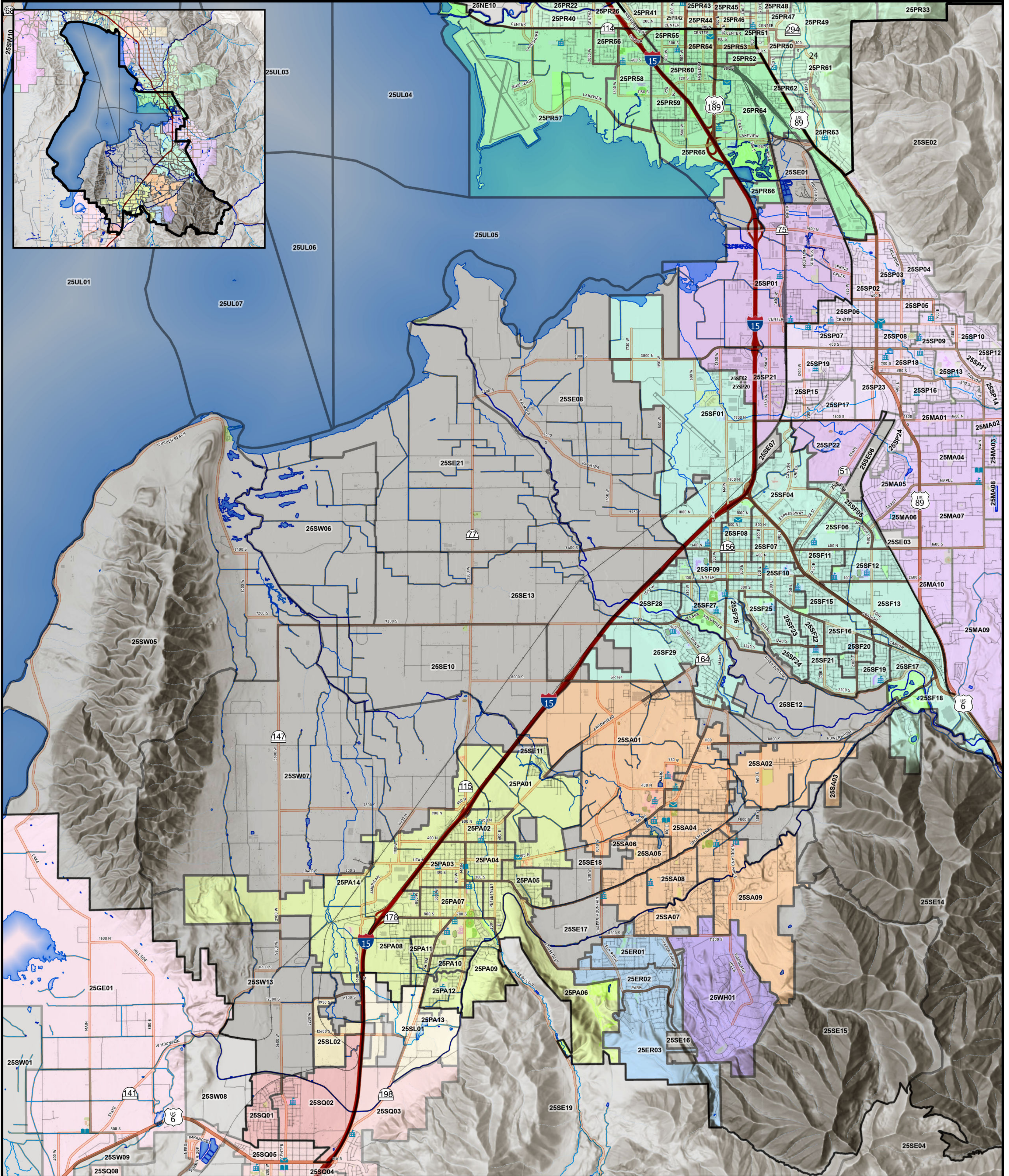


State Senate 25



0 1 Kilometers
0 1 Miles

- | | | | | | | |
|---------------------|--------------------------------|-------------|--|-------------------|--------------|----------------|
| Government Facility | Railroads | Golf Course | Education | Precincts by City | Provo | Spring Lake |
| Library | Canal or Ditch | Park | Emergency Response and Law Enforcement | Elk Ridge | Salem | Springville |
| Post Office | Stream or River | | Health and Medical | Genola | Santaquin | Unincorporated |
| Education Facility | Stream or River - Intermittent | | Government and Military | Mapleton | Spanish Fork | Woodland Hills |
| | State Senate 25 | | | Payson | | |