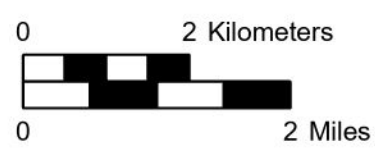
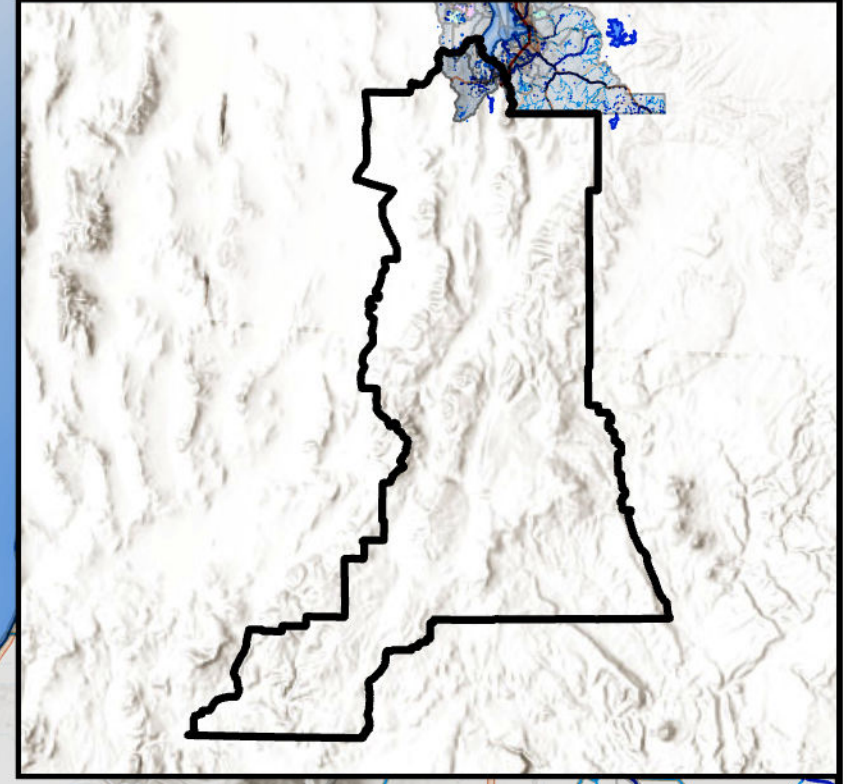
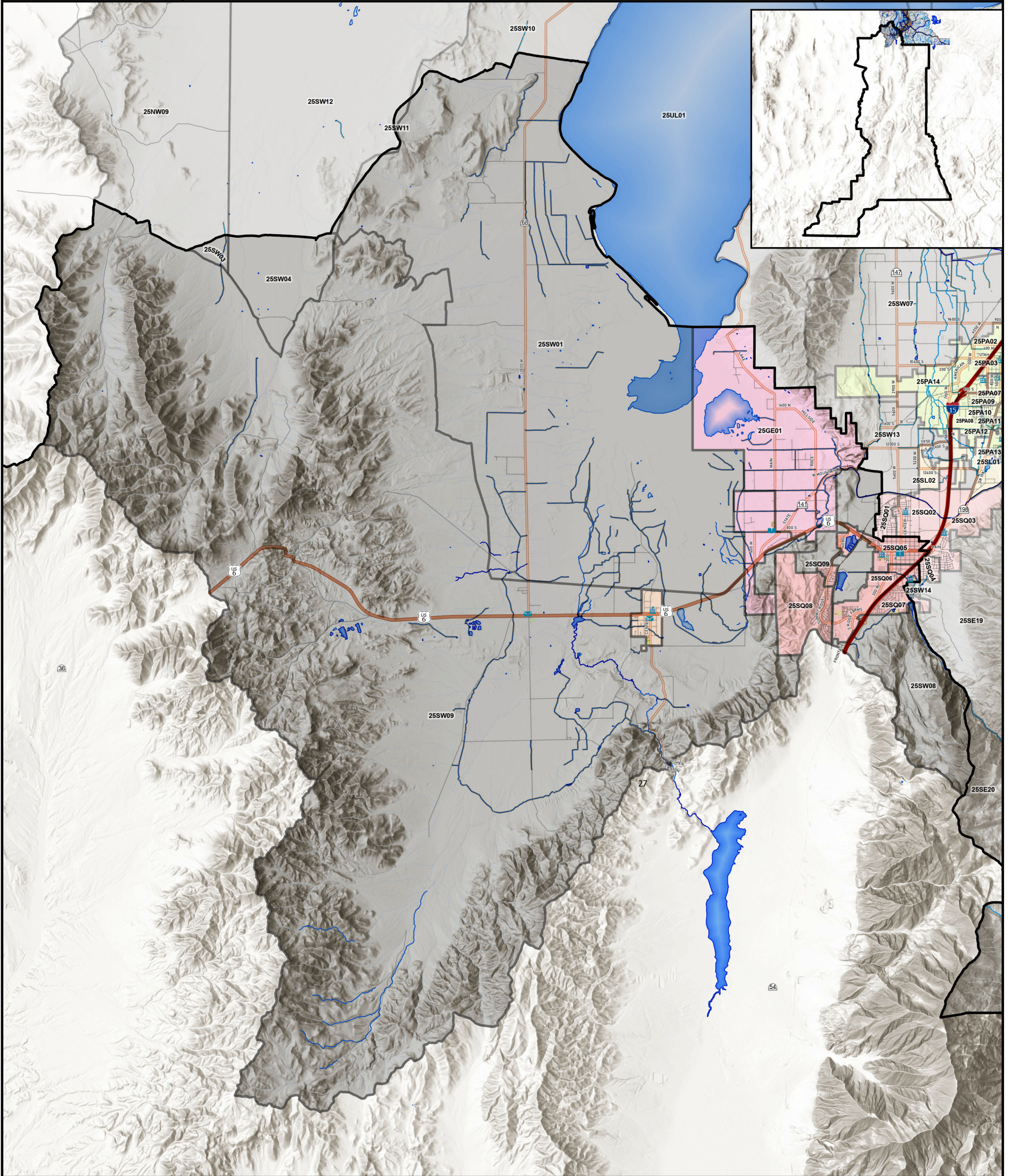


State Senate 27



| Legend | | | | | |
|--------------------|--------------------------------|-----------------|----------------------------------------|-------------------|----------------|
| Library | Railroads | State Senate 27 | Education | Precincts by City | Santaquin |
| Post Office | Canal or Ditch | Park | Emergency Response and Law Enforcement | Goshen | Spring Lake |
| Education Facility | Stream or River | | Health and Medical | Payson | Unincorporated |
| | Stream or River - Intermittent | | Government and Military | | |